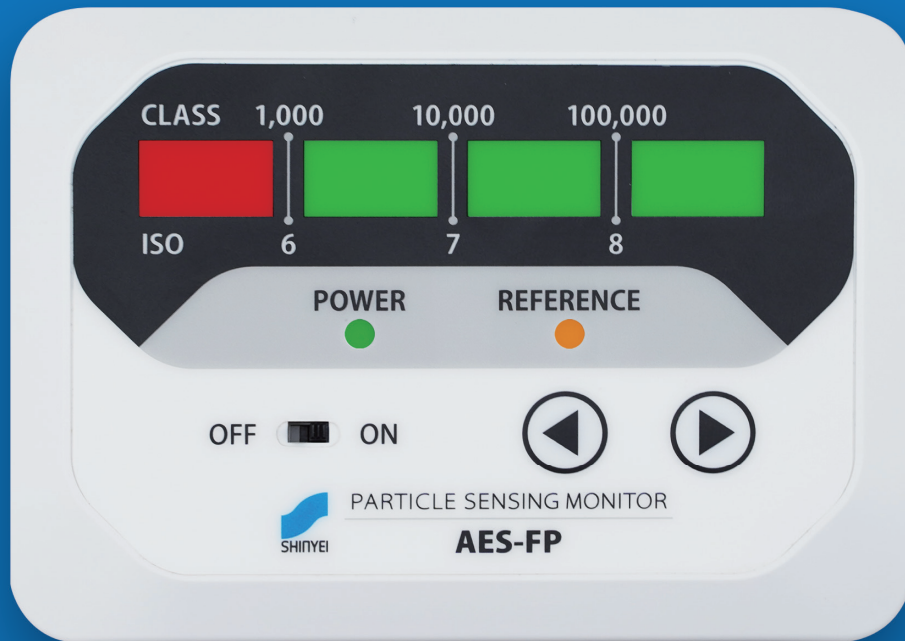


Particle Sensing Monitor AES-FP Series

Measurement with sensor unit
independently is possible.



AES-FPS(Sensor Unit)
57 × 83 × 23.7(mm)

AES-FPM (Monitor)
87 × 120 × 46.5(mm)

Image in
Full-size

The best way to monitor cleanliness level in the manufacturing process of precision parts and work environments at low cost.

Feature

- Capable to detect suspended particles at low cost.
- Easy-to-check 4 step LED display for cleanliness level Class 1,000 to 100,000.
- Detect particles over $0.3\mu\text{m}$ and over a few μm^* (*reference value).
- 5 models available for suitable application and communication interface.
- Detachable sensor unit to maintain continuous measurement during calibration.
- Temperature and humidity sensor available as an option.

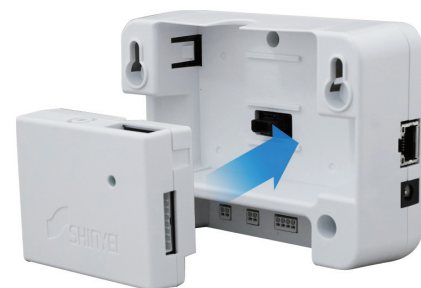
Specification

(*)1 Class1,000 is reference information.
 (*)2 Unit can be changed only for FPM-2/4. Unit for over a few μm is [pcs/min] as fixed.
 (*)3 The dedicated AC adapter is supplied separately as an option.
 (*)4 Temperature and humidity sensor (Model#: CHU-L151-11A-AES) is required as an option.

| | | Particle Sensing Monitor | | | | Particle Sensor Unit |
|---|---------------------|--|--------------|-------|----------------------|----------------------|
| Model # : AES-□□□ | | FPM-1 | FPM-2 | FPM-3 | FPM-4 | FPS |
| Optical Source | | Laser Diode | | | | |
| Detectable Particle Size | | Over $0.3\mu\text{m}$ / Over a few μm (Reference) | | | | |
| Measurement Range | | Class1,000 ~ Class100,000 (*)1 | | | | |
| Unit | | pcs/ m^3 (default), pcs/cf, pcs/L (*)2 | | | | |
| Output Average Time | | 60s | | | | |
| Data Update Time | | 1s | | | | |
| Power | | 12 ~ 24V (*)3 | | | | |
| Power Consumption (max) | | 600mA | | | | 200mA |
| Operating Temperature | | 0 ~ 40°C | | | | |
| Storage Temperature | | -20 ~ 60°C | | | | |
| Operating Humidity | | 30 ~ 80%rh | | | | |
| Storage Humidity | | Below 90%rh (No condensation) | | | | |
| Output | LED Level Display | ○ | ○ | ○ | ○ | — |
| | Reference LED | ○ | ○ | ○ | ○ | — |
| | Analog Voltage | — | — | ○ | — | — |
| | Digital (Interface) | — | ○ (Ethernet) | — | ○ (Ethernet) (Wi-Fi) | ○ (RS485) |
| Alarm Output | | ○ | ○ | ○ | ○ | — |
| Temperature and Humidity Measurement (*)4 | | — | ○ | — | ○ | — |
| Weight | | Approx. 210g | | | | Approx. 65g |
| Applicable Wire Size | | AWG26 ~ 20 | | | | |

Detachable Sensor Unit

Sensor unit is detachable and replaceable with new sensor unit to maintain continuous measurement during the sensor calibration.

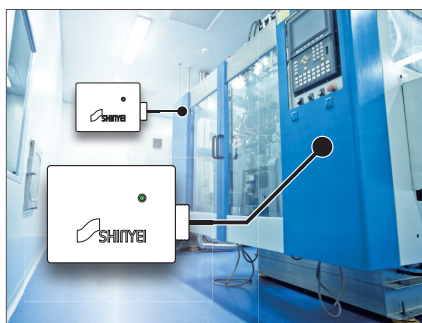


Application



Multi-point Measurement in Cleanroom

Capable to measure at multiple points at the same time. Easy network construction.



Install Sensor Unit into Production Equipment

Install sensor unit into production equipment such as semiconductor to monitor suspended particles inside. Useful for keeping manufacturing quality in good.



Monitoring at Data Center and Server Room

Constant monitoring in places where particles accumulation is disliked. Contribute to managing cleaning frequency.

Calibration Service

Annual calibration of sensor unit is recommended. For details, please contact retailer or us directly.

● Issued Documents:

- Calibration Certificate
- Inspection Report
- Traceability System Diagram

Temperature and Humidity Sensor (Optional)

Connect optional sensor (CHU-L151-11A-AES) to Particle Sensing Monitor for monitoring temperature and relative humidity continuously.

